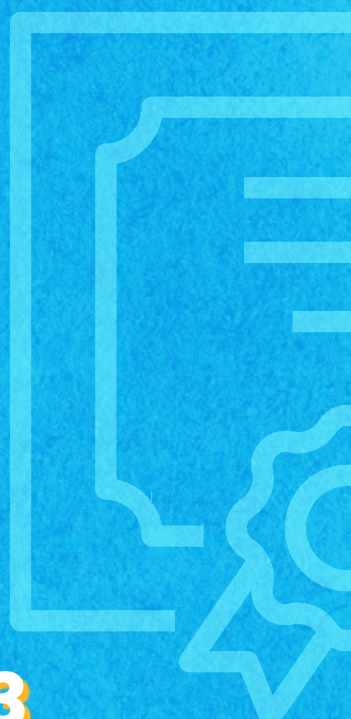




2021/22
LEARNER
INFORMATION



Diploma of Child, Youth and Family Intervention CHC50313

Integrating therapeutic perspectives and practice

This intake will commence on Wednesday 3rd November 2021 and will finish in February 2023

SAL Consulting has been providing customised support to people and organisations within the community, disability, health and youth sectors for over 15 years. We create strong, reciprocal relationships with individuals and organisations through communication and collaboration, which plays an integral part in our practice and ethos.

Our service delivery is supported by the latest research, best practice models and a hands-on approach. We are committed to assisting individuals and agencies to achieve the best possible outcomes through meaningful collaboration and enablement.

Our team of 35 consultants is a highly qualified, diverse, multidisciplinary group, with specialised and on-the-ground experience in the community services, health, disability and youth sectors. Many of our consultants have held senior positions in government and nongovernment agencies, and are experienced in designing and providing quality services. SAL Consulting is accredited by the Child Trauma Academy to deliver the Neurosequential Model of Therapeutics, and are members of the Neuroleadership Institute.



Diploma Overview

SAL Consulting's Diploma of Child, Youth and Family Intervention (CHC50313) will equip you with the necessary skills and knowledge to engage with and support clients within both residential and/or non-residential settings in government or non-government community services.

These settings include:

- out-of-home care
- Permanency Support Programs
- early intervention
- intensive family-based services
- schools
- youth work & youth justice
- homelessness
- family violence



Course Overview

Entry Requirements:

Our focus is on building capacity in the child, youth and family sectors by providing a course that targets learners who have prior experience in, and/or are working within, the child, youth and family sectors or other related fields at the time of enrolment. The course is open to individual learners or organisations looking to qualify their staff.

There are no formal entry requirements however we are expecting learners are currently working in an appropriate industry. Enrolment in the Diploma does not guarantee completion. Learners will need to demonstrate competency in all seven modules to receive the qualification.

Duration:

The full Diploma pathway runs for approximately 16 months.

Course Delivery:

The course is delivered in a blended pathway using our online learning platform along with live webinars.

Learners will complete online readings and assessment work and will submit assessment work through the portal. Webinar classes will be supported by follow-up tutorials to provide learners with opportunities to clarify learning and assessment information.

The course timetable has been designed to fit into your work role - you will be required to use current workplace examples in your assessment tasks and in group discussions and reflections.

This Diploma will provide you with a pathway to enter these fields or enhance your knowledge and skills if you are already working within any of these environments.

You can choose to complete the entire course to gain the Diploma or opt to attend one or more of the modules to tailor your professional development.

The Diploma is available to you as an individual learner or to agencies wishing to upskill their workforce by providing opportunities to gain a qualification.

Our Diploma bridges the gap between theory and practice to provide you with a hands-on, high-quality learning experience that is relevant to your work practice.

What Makes Our Diploma Different to Others?

Our Diploma course incorporates Neurodevelopment, Attachment and Trauma Informed (NATI) principles and therefore offers a unique approach to child, youth and family work. These principles are incorporated across all of the Diploma subjects to enhance the core content and to enable you to work with children, youth and families from a therapeutic approach.

We are the only Registered Training Organisation in Australia that integrates the NATI approach across all of our services, including clinical work, therapy, organisational development and training. We are also an accredited provider of the Neurosequential Model of Therapeutics (NMT) as developed by Dr Bruce Perry at the Child Trauma Academy in the USA.

You will learn about:

- child development, trauma and attachment
- proactive therapeutic case management
- working with diverse client groups and families with complex issues, and
- group work, and supporting clients to improve relationships, all underpinned by NATI principles.



Can I receive Recognition of Prior Learning (RPL)?

We recognise that you may have years of experience in the workplace, or a previous qualification. You can gain Recognition of Prior Learning (RPL) by having your knowledge and skills mapped against the individual units of competency in the Diploma, thus reducing the time and study load to gain the qualification.

We can assist you to identify the competencies you already have and provide evidence to validate your existing knowledge and skills. You may also be eligible for credit transfer if you have previously completed a subject that is identical to the one in this program. In either case, this means you may be exempt from undertaking the assessment for either the whole unit or the whole module. Further details on RPL will be provided upon request or once you have enrolled.

Student Support:

If you have any learning or physical difficulties that may have an impact on your learning, our workshops, tutorials and materials can be adapted and delivered appropriately, e.g. using large print, slower pace of information delivery, or verbal rather than written assessment. Please advise us of your needs prior to enrolment so that we can discuss options to support you.

Investment:

The course fee of the Diploma is \$4,900. We do not collect the course fee in advance. Payment is made in instalments before each module, or you can negotiate a payment plan.

The total cost includes all of the following resources to support you in successfully completing your studies:

- Course attendance
- Resources and handouts
- Online learning
- Ongoing support from SAL Trainer/Assessor
- One-on-one or group sessions with SAL Trainer/Assessor if required
- Catering at workshops
- Issuance of Certificate of Attendance,
- Statement of Attainment or Diploma



Expression of Interest and Enrolment:

To find out more about this qualification, and to enrol, please contact us.

P: 0439 203 615

E: rto@salconsulting.com.au



Your Rights and Obligations as a Consumer:

It is important to be informed about your consumer rights and obligations when choosing a training or education provider.

For more information about these rights and obligations, please visit the following websites:

Australian Skills Quality Authority (ASQA) -

<http://www.asqa.gov.au/media-and-publications/choosing-a-training-or-education-provider.html>

The delivery of all training and assessment services by SAL Consulting is guided by the requirements set out in the Standards for Registered Training Organisations (RTOs) 2015.

Please note: all students must have a Unique Student Identifier (USI). If you do not have a number or are unsure of what your number is, please go to www.usi.gov.au/students

For further general information on this qualification please visit www.myskills.gov.au



Course Modules

The following dates are correct at time of printing. They may be updated as the program progresses.

Course Orientation Webinar

Wednesday 3rd November 2021

10.00am – 12.00pm

Module One:

Trauma and attachment – Therapeutic underpinning knowledge

This module explores the skills and knowledge required to recognise and support the different stages of, and the interrelationship between, the physical, social, emotional, cognitive and communication development of children and young people. You will also learn about the skills and knowledge required to recognise indicators of trauma in children and young people of different ages and at different stages, and to identify their needs and those of their parents and carers. Appropriate communication and support strategies, information gathering and reporting will also be covered.

CHCPRT010 Work with children and young people with complex trauma and attachment issues and needs

LIVE WEBINARS:

Wednesday 17th November 2021

9.30am – 2.00pm

Thursday 18th November 2021

9.30am – 2.00pm

TUTORIAL:

Thursday 2nd December 2021

9.30am – 10.30am

Module Two:

Risk minimisation in the family work context

This module focuses on the development of skills and knowledge required to support children and young people in the child protection context, and to assist families to ensure that children and young people are safe and appropriately cared for. You will identify and respond to the needs of clients who may be experiencing domestic and family violence, including responding to immediate intervention and support needs.

CHCPRT004 Work effectively in child protection to support children, young people and families

CHCDFV001 Recognise and respond appropriately to domestic and family violence

LIVE WEBINARS:

Tuesday 1st February 2022

9.30am – 2.00pm

Wednesday 2nd February 2022

9.30am – 2.00pm

TUTORIAL:

Wednesday 16th February 2022

10.00am – 11.00am

Module Three:

Professional development and practice

In this module, you will gain knowledge and skills to evaluate, enhance and manage your professional practice through a process of reflection and ongoing professional development in child protection and effective communication. Use professional experience and practice frameworks for reflective practice and to deepen sectoral expertise within child protection and family work contexts.

CHCPRP003 Reflect on and improve own professional practice

CHCPRT006 Build professional practice and sectoral expertise

CHCCOM003 Develop workplace communication strategies

LIVE WEBINARS:

Tuesday 22nd March 2022

9.30am – 2.00pm

Wednesday 23rd March 2022

9.30am – 2.00pm

TUTORIAL:

Wednesday 6th April 2022

9.30am – 10.30am

Module Four: Case management

This module provides all aspects of holistic, therapeutic and person-centred case management practice, from the initial assessment to developing of case management plan, to case closure. You will develop the skills and knowledge required to assess and respond to the diverse and multi-faceted needs of people and determine both internal and external services required to meet those needs, using a collaborative, holistic approach.

CHCCCS004 Assess co-existing needs

CHCCCS016 Respond to client needs

CHCCSM005 Develop, facilitate and review all aspects of case management

CHCDEV003 Analyse client information for service planning and delivery

Module Five: Cultural and gender intelligence

This module deals with communicating and working respectfully with people from diverse social and cultural groups and situations, including Aboriginal and/or Torres Strait Islander people. Identifying Aboriginal and/or Torres Strait Islander cultural safety issues in the workplace, modelling cultural safety in own work practice, and developing strategies to enhance cultural safety will also be covered.

CHCDIV001 Work with diverse people

CHCDIV002 Promote Aboriginal and/or Torres Strait Islander cultural safety

Module Six: Complex family issues

You will gain knowledge and skills required to assess the needs of clients who are experiencing issues around alcohol and other drugs (AOD) and/or mental health, and to provide appropriate referrals and support. You will learn about preparing and conducting client assessments and providing feedback and referrals. You will learn strengths-based approaches to establishing respectful and collaborative relationships with a diverse range of clients.

CHCAOD001 Work in an alcohol and other drugs context

CHCMHS001 Work with people with mental health issues

Module Seven: Therapeutic group skills

This module introduces the knowledge and skills to establish, lead and participate in formal or informal groups using a collaborative, strengths-based approach to meet individual needs and outcomes of group members. You will learn about group needs assessment, designing and coordinating group processes, organising resources, conflict management and evaluation and documentation. You will also learn about engaging with people to determine interpersonal relationship needs, support building and maintaining interpersonal relationships, using a strengths-based approach.

CHCFAM003 Support people to improve relationships

CHCGRP002 Plan and conduct group activities

LIVE WEBINARS:

**Tuesday 3rd May 2022
9.30am – 2.00pm**

**Tuesday 10th May 2022
9.30am – 2.00pm**

TUTORIAL:

**Tuesday 17th May 2022
9.30am – 10.30am**

LIVE WEBINARS:

**Tuesday 12th July 2022
9.30am – 2.00pm**

**Wednesday 13th July 2022
9.30am – 2.00pm**

TUTORIAL:

**Tuesday 26th July 2022
9.30am – 10.30am**

LIVE WEBINARS:

**Tuesday 6th September 2022
9.30am – 2.00pm**

**Wednesday 7th September 2022
9.30am – 2.00pm**

TUTORIAL:

**Tuesday 20th September 2022
9.30am – 10.30am**

LIVE WEBINARS:

**Tuesday 1st November 2022
9.30am – 2.00pm**

**Tuesday 8th November
9.30am – 2.00pm**

TUTORIAL:

**Tuesday 15 November 2022
9.30am – 10.30am**